

YOUNG PEOPLE

Living in Poverty & Experiencing Inequality in Australia

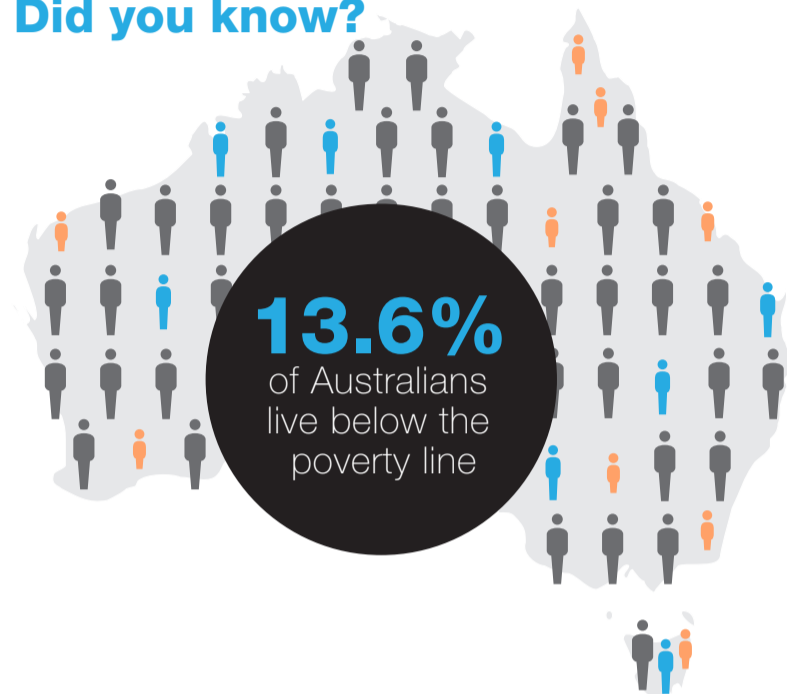
KWM
COMMUNITY
IMPACT

KING & WOOD
MALLESONS
金杜律师事务所

What is Poverty & Inequality?

The Organisation for Economic Co-operation and Development (OECD) defines the poverty line as half the median household income of the total population. In Australia, this translates to a single adult living on less than \$426.30 a week. A system that leaves people behind is bad for the economy as well as people. When people have to go without meals, sleep on the streets, can't afford healthcare or access a lawyer, we are seeing the impacts of inequality.

Did you know?

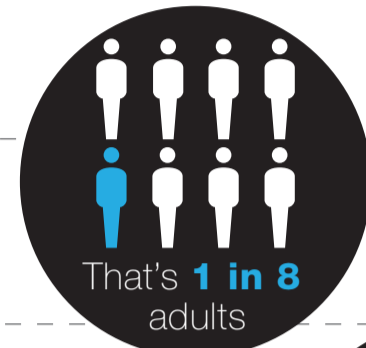


That's **3.24 million** people

That's **422,800** young people

That's **754,000+** children

That's **1.1+ million**
children & young people



Did you also know?

Aboriginal and Torres Strait Islander Australians are especially vulnerable to poverty & inequality. Indigenous Australians are approximately:

9.8x

more likely to
be placed in
out-of-home care

18x

more likely
to be under
community-based
supervision

24x

more likely to be
in detention than
non-Indigenous
children

And while we're here...

People aged between 15 and 24 years who experience homelessness, disability, are Aboriginal and Torres Strait Islander, live in out-of-home care and/or are parents, report experiencing legal problems.

Key causes:



Justice System

Children and young people need access to free legal assistance because of their inexperience, limited knowledge of the law, lack of resources to secure advice and representation, and the systemic barriers created by an adult legal system.



Work & Income

There are large numbers of young people who are out of work or only have a few hours of work per week. They must rely mainly on social security payments for their income.



Education

Low education levels are linked to unemployment and, subsequently, the risk of living in poverty. Families with low levels of education often cannot afford to better educate their children and so give them increased chances of employment.



Housing

Housing impacts on a young person's ability to find work, education and training – regions and cities with jobs often have high housing prices and rental rates. Poor housing can also negatively affect a young person's health and wellbeing.



Health & Disability

Young people living in poverty commonly suffer greater levels of physical and mental illness, including drug and alcohol issues. The high stress associated with living in poverty can also contribute to behaviour which leads to further health risks.



Services

Access to affordable community services is an important poverty prevention strategy by helping disadvantaged children & young people to fully participate in social and economic life.

How is KWM responding? Visit kwm.com to see our 2022 Strategic Vision